

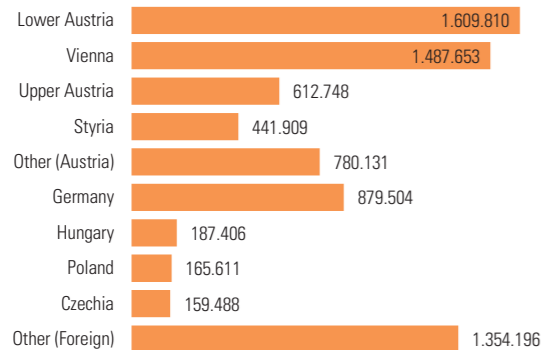
# Lower Austria in Figures 2020

## Economy

### Agricultural production 2019

Product	Unit	Ø Lower Austria 05-18	Lower Austria	Percentage Lower Austria of Austria
Cereals and maize	t	2.271.062	2.483.142	45,8
Vegetables	t	309.204	326.875	53,5
Potatoes	t	570.867	610.450	81,3
Sugar beets	t	2.356.507	1.349.285	68,7
Alternative cultures	t	200.196	204.605	45,6
Pasture farming	t	1.501.712	1.166.688	19,5
Fruit production	t	27.393	33.288	14,8
Wine production	hl	1.467.164	1.488.813	64,1
Bovine livestock	head	447.467	419.664	22,3
Swine livestock	head	824.314	769.203	27,7

### Nights spent 2019 by origin

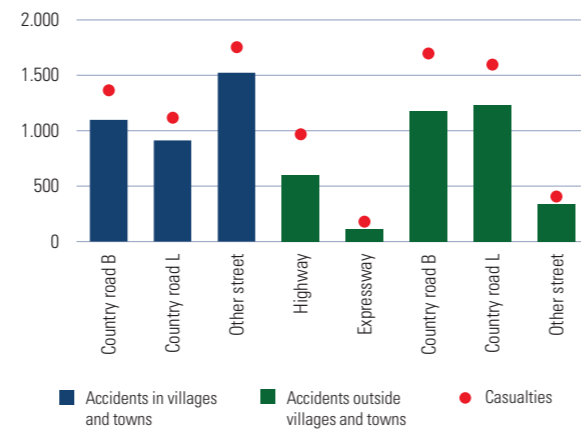


## Health Care

Ordnations by fields	2018	2019	2020
General medical practitioner	1.706	1.653	1.706
Specialist medical practitioner	2.082	2.096	2.231
Internal medicine	369	377	387
Surgery/Trauma surgery	332	327	353
Psychiatry/Neurology	261	269	301
Orthopedic/Orthopedic Surgery	212	218	249
Gynaecology/Obstetrics	236	227	246
Ophthalmology	132	136	138
Pediatrics	130	129	138
Dentists	608	610	597
Pharmacies	243	244	245

## Road Traffic

### Road accidents with casualties 2019



### Vehicles by type

Type of vehicle	2009	2014	2019
Motor vehicles	1.346.928	1.448.668	1.561.252
Passenger cars	950.011	1.025.527	1.102.464
Passenger cars with electric drive	65	731	6.378
Passenger cars with hybrid drive	775	2.561	10.292
Motorcycles	83.625	110.355	117.351
Motorcycles (not more than 45 km/h, 50 cc and 4 kW)	65.109	58.040	55.025
Lorries	82.116	92.597	108.031
Busses	967	990	1.082
Tractors	131.507	135.958	139.168
Trailers	172.480	193.403	218.331

## Security

	Executive staff	Stations	Vehicles
Police (2020)	4.642	272	1.075
	Active members	Number	Vehicles
Fire brigade (2020)	75.801	1.709	6.009
	Employees	Stations <sup>1)</sup>	Vehicles
Red Cross rescue service (2019)	11.060	142	722
Arbeiter-Samariter-Bund rescue service (2019)	1.900	22	138
Johanniter (2019)	18	1	2

<sup>1)</sup> with medical vehicles

## Education

### Institutions 2019

	Number	Groups/Classes	Children/Students
Kindergarten	1.095	3.149	54.888
After-school care	155	453	9.708
Primary school	633	3.562	64.836
New secondary school	256	2.056	39.168
Special needs education	87	453	3.808
Pre-vocational school	58	156	2.983
Secondary school/Colleges for vocational training	111	1.504	34.935
Academic secondary school	57	1.619	37.476
Tertiary education	6	-	19.455



Johanna Mikl-Leitner, Governor of Lower Austria

In times of crisis, statistics are a particularly important tool for keeping an eye on triggering factors, as well as managing concomitant developments in order to safeguard the security of citizens. Our statistics folder contains the latest data, making it the perfect tool to obtain a general overview.



Martin Eichinger, Member of the Government of Lower Austria

Statistics mean working with quantitative data. Our statistics folder for 2020, which provides up-to-date information on the latest developments in our state, once again proves that the abundance of data available for a state as large as Lower Austria can be summarised and presented in a small format.

### References

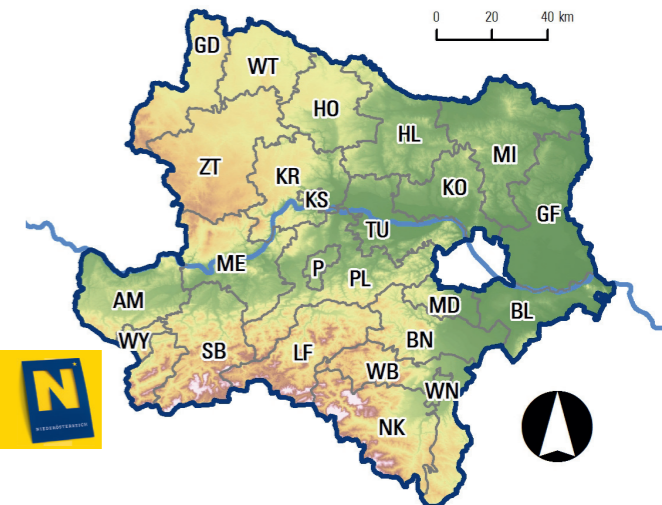
Statistics Austria; Federal Office of Metrology and Surveying; NÖ Economic Chamber; RegioData Research GmbH; Public Employment Service Austria; Social Insurance NÖ; Medical Association NÖ; Regional Dental Association NÖ; Pharmaceutical Salary Fund of Austria; Regional Police Command NÖ; Regional Fire Brigade Command NÖ; Austrian Red Cross – Regional Association NÖ; Arbeiter-Samariter-Bund – Regional Association NÖ; Johanniter

### Publisher and Producer

Office of the Lower Austrian Federal Government  
 Department of Spatial Planning and Transport Affairs – Statistics  
 Landhausplatz 1, 3109 St. Pölten  
 Responsible for content: Markus Hemetsberger  
 Graphics: Laudenbach, 1070 Wien  
 Print: Office of the Lower Austrian Provincial Government  
 e-Mail: post.ru7statistik@noel.gv.at · Tel. +43 2742 9005-14971

www.noel.gv.at

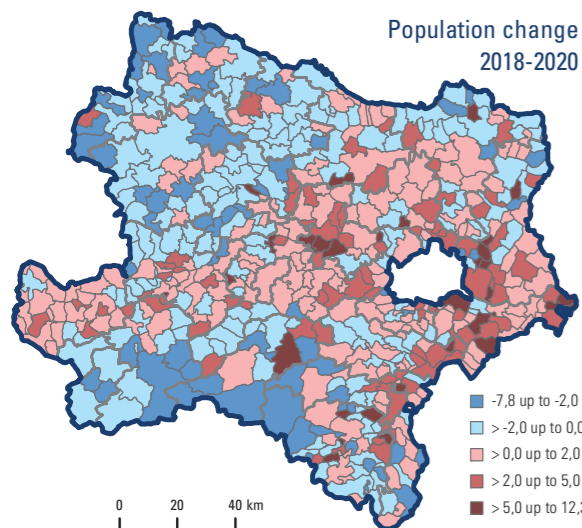
Resident population (2020)	1.684.287
Percentage females	50,8%
Area (2019)	19.179 km <sup>2</sup>
Forest	39,7%
Agricultural use	48,3%
Building area	1,1%
Permanent settlement area	60,6%
Length of national border	414 km
Statutarstädte (Towns with charters)	4
Verwaltungsbezirke (Administrative districts)	20
Gemeinden (Municipalities)	573
Stadtgemeinden (Urban municipalities)	76
Marktgemeinden (Market towns)	327
Katastralgemeinde (Cadastral communities)	3.040
Ortschaften (Localities)	3.764
District courts	26
Prisons and penal institutions	10
Civil registry offices	182
Hospitals	27
Largest lake: Ottensteiner Stausee	4,3 km <sup>2</sup>
Highest mountain: Schneeberg	2.076 m
Longest river: Donau	2.848 km
within Lower Austria	218 km



## Population

### Demography 2019

Administrative district	Births	Deaths	Immigration	Emigration
Krems a.d. Donau	224	288	2.145	1.923
St. Pölten	490	531	3.679	3.173
Waidhofen a.d. Ybbs	114	120	435	469
Wr. Neustadt	487	505	3.748	3.174
Amstetten	1.182	1.080	3.360	3.052
Baden	1.258	1.398	7.521	6.825
Bruck a.d. Leitha	910	998	6.048	4.258
Gänserndorf	922	991	4.967	3.820
Gmünd	303	497	834	864
Hollabrunn	410	548	1.893	1.602
Horn	268	440	801	788
Korneuburg	766	847	4.118	3.666
Krems (Land)	455	517	1.633	1.676
Lilienfeld	227	297	959	1.042
Melk	754	802	2.426	2.137
Mistelbach	627	994	2.496	1.993
Mödling	870	1.234	5.608	5.133
Neunkirchen	702	929	3.145	2.867
St. Pölten (Land)	1.176	1.227	5.542	4.799
Scheibbs	396	423	1.207	1.173
Tulln	893	1.154	4.796	3.723
Waidhofen a.d. Thaya	186	346	581	628
Wr. Neustadt (Land)	682	800	3.538	3.103
Zwettl	350	483	800	904
Lower Austria	14.652	17.449	72.280	62.792

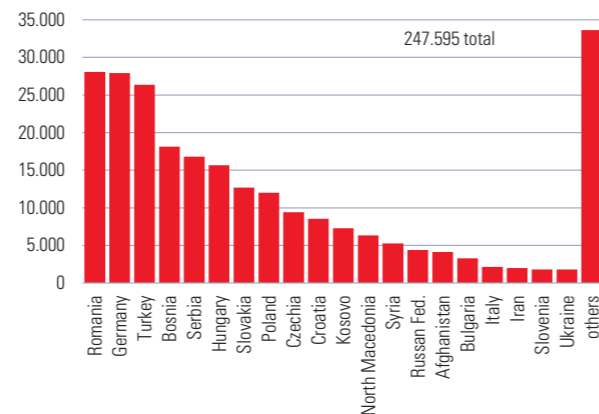


## Population

### Population 2020 by age group

Administrative district	total	0-14	15-49	50-64	65-79	80+
Krems a.d. Donau	25.036	3.092	10.757	5.705	3.904	1.578
St. Pölten	55.514	7.784	24.420	12.214	7.771	3.325
Waidhofen a.d. Ybbs	11.222	1.659	4.718	2.456	1.579	810
Wr. Neustadt	45.823	7.161	21.348	9.476	5.745	2.093
Amstetten	116.520	18.580	50.714	26.252	14.525	6.449
Baden	146.751	21.166	62.546	34.068	21.457	7.514
Bruck a.d. Leitha	103.735	15.748	45.422	23.332	14.215	5.018
Gänserndorf	104.782	15.628	44.215	24.661	14.774	5.504
Gmünd	36.553	4.530	14.089	8.809	6.225	2.900
Hollabrunn	51.033	6.670	20.566	12.480	7.899	3.418
Horn	30.936	4.038	12.114	7.417	4.936	2.431
Korneuburg	91.254	13.131	38.115	22.516	12.625	4.867
Krems (Land)	56.487	7.791	22.979	13.631	8.507	3.579
Lilienfeld	25.655	3.596	10.188	5.928	4.107	1.836
Melk	78.191	11.738	33.586	17.890	10.307	4.670
Mistelbach	75.625	10.061	30.545	18.753	11.395	4.871
Mödling	119.115	16.689	48.743	27.679	19.325	6.679
Neunkirchen	86.343	11.880	35.390	20.116	13.420	5.537
St. Pölten (Land)	131.729	20.001	54.984	30.827	18.902	7.015
Scheibbs	41.414	6.473	17.924	9.052	5.522	2.443
Tulln	104.593	15.401	43.486	24.687	15.144	5.875
Waidhofen a.d. Thaya	25.682	3.221	10.098	6.279	4.042	2.042
Wr. Neustadt (Land)	78.307	11.469	32.828	18.034	11.828	4.148
Zwettl	41.987	5.772	16.998	10.134	5.996	3.087
Lower Austria	1.684.287	243.279	706.773	392.396	244.150	97.689

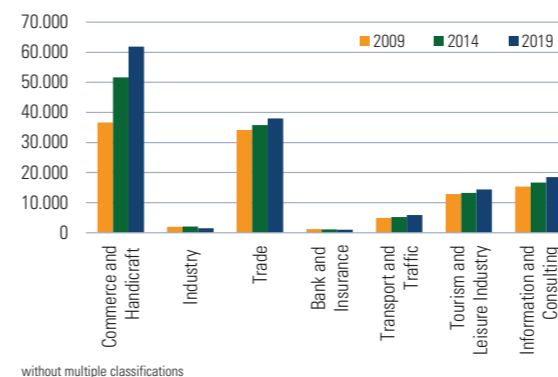
### Residents of foreign origin 2019



## Economy

Gross regional product per capita 2017 in €	34.900
Imports 2018 in billion €	25,9
Exports 2018 in billion €	23,1
Employment relations 2019 (annual average)	629.613
Number of apprentices 2019	16.811
Registered unemployed 2019 (annual average)	50.745
Unemployment rate 2019 (annual average)	7,5%
Job vacancies (AMS; May 2019)	12.404
Job vacancies (AMS; May 2020)	10.318
Purchasing power per capita 2019 (RegioData, AT=100)	103,6
Purchasing power per household 2019 (RegioData, AT=100)	107,0
Active business units 2019	118.676
Formation of enterprises 2018	7.910

### Active business units 2009–2019 by branch



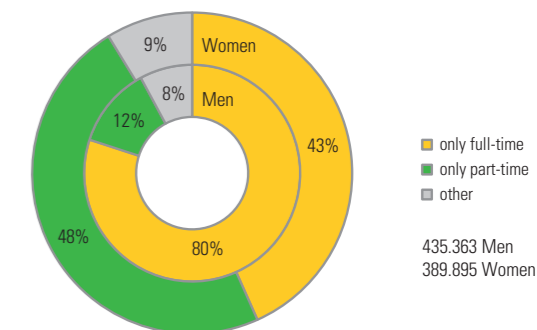
### Employed persons 2017

	total	Men	Women
Employed persons	825.230	435.331	389.899
Employees	721.260	374.272	346.988
self-employed, family workers	103.970	61.059	42.911
part-time in percent	30,6%	11,7%	51,5%
<b>Economic sector</b>			
Agriculture	38.994	20.332	18.662
Production	180.383	139.827	40.556
Services and unknown	605.853	275.172	330.681
<b>Educational level (persons 25 to 64 years of age)</b>			
Compulsory education	85.982	37.020	48.962
Integrated vocational training	252.223	164.869	87.354
Secondary technical/vocational schools	164.930	72.299	92.631
Higher vocational/Academic secondary schools	90.168	45.894	44.274
Universities and other tertiary education	118.100	52.604	65.496

Register-Based Labour Market Statistics

## Economy

### Wage tax-payers 2018 by working time and sex



### Gross annual income 2018 by sex

Administrative district	per capita income in € (Median)		
	total	Men	Women
Krems a.d. Donau	29.572	36.165	23.098
St. Pölten	30.447	36.692	23.831
Waidhofen a.d. Ybbs	29.452	37.577	21.445
Wr. Neustadt	30.280	35.912	24.009
Amstetten	29.957	38.752	20.572
Baden	31.542	37.958	25.296
Bruck a.d. Leitha	32.190	38.428	25.778
Gänserndorf	31.993	38.500	25.141
Gmünd	26.020	33.130	19.563
Hollabrunn	28.642	34.735	22.145
Horn	27.621	33.663	21.370
Korneuburg	33.310	39.774	26.723
Krems (Land)	28.635	36.113	21.092
Lilienfeld	27.965	34.854	21.063
Melk	28.558	35.492	20.697
Mistelbach	30.271	36.907	23.115
Mödling	35.103	42.000	28.540
Neunkirchen	29.267	35.935	22.540
St. Pölten (Land)	30.783	37.626	23.622
Scheibbs	28.404	35.543	19.914
Tulln	32.828	39.352	25.918
Waidhofen a.d. Thaya	26.072	32.665	19.879
Wr. Neustadt (Land)	30.287	36.680	23.230
Zwettl	25.288	32.266	18.109
Lower Austria	30.555	37.210	23.485

Wage tax statistics 2018 - per capita income of wage tax-payers employed more than 334 days a year