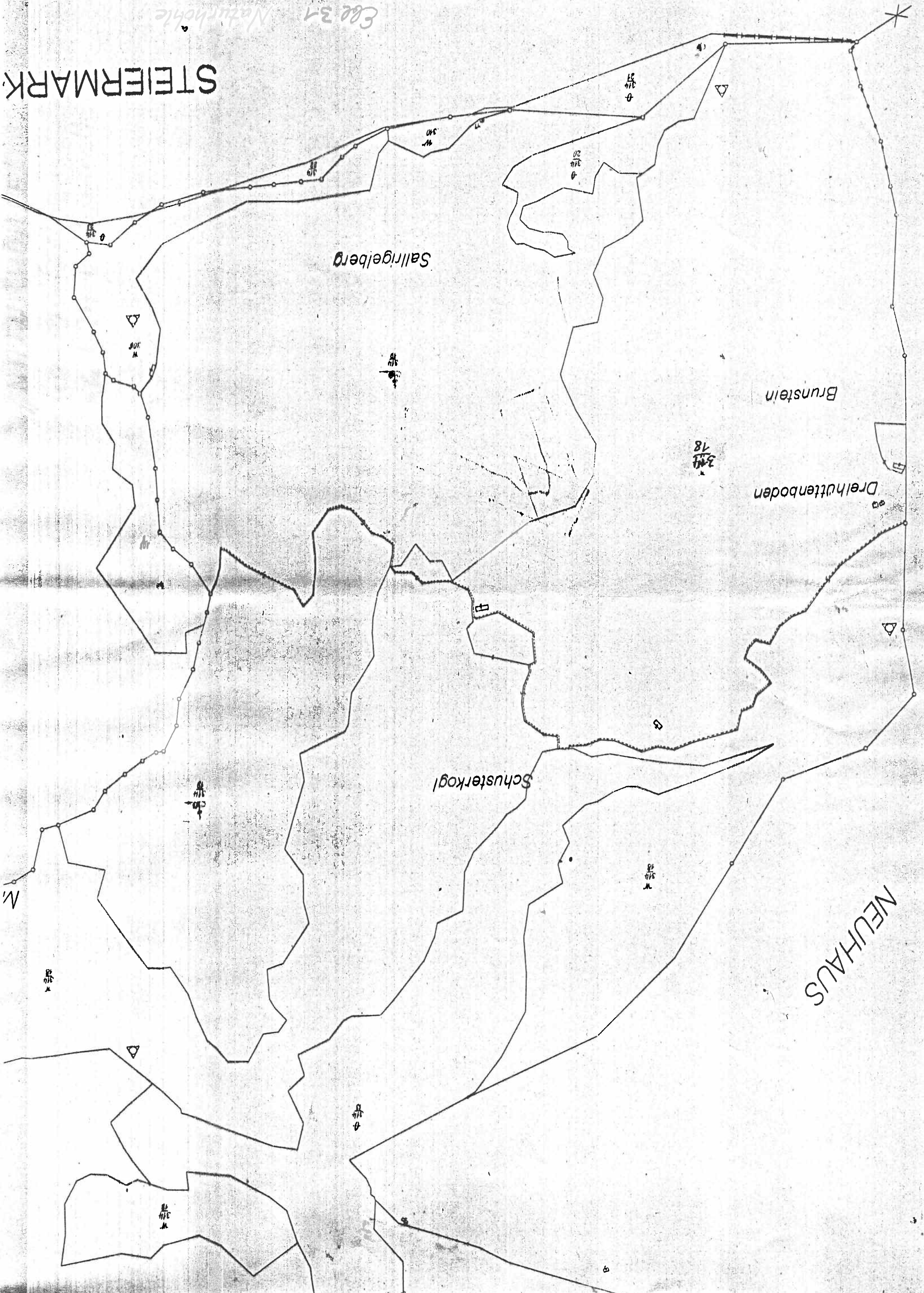


DATE: 3/14/18

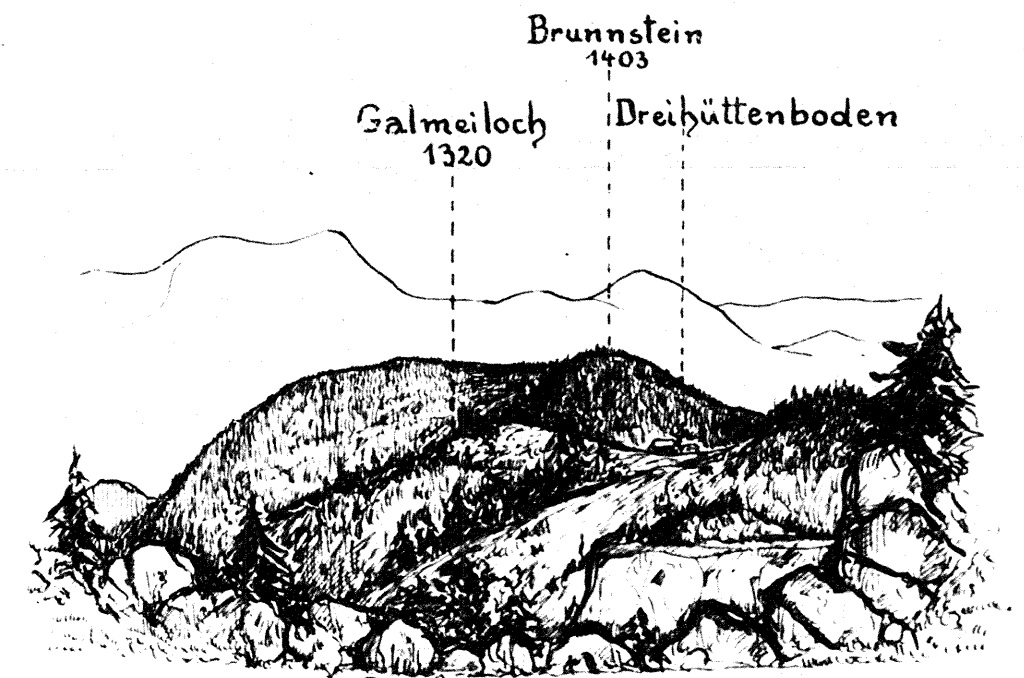
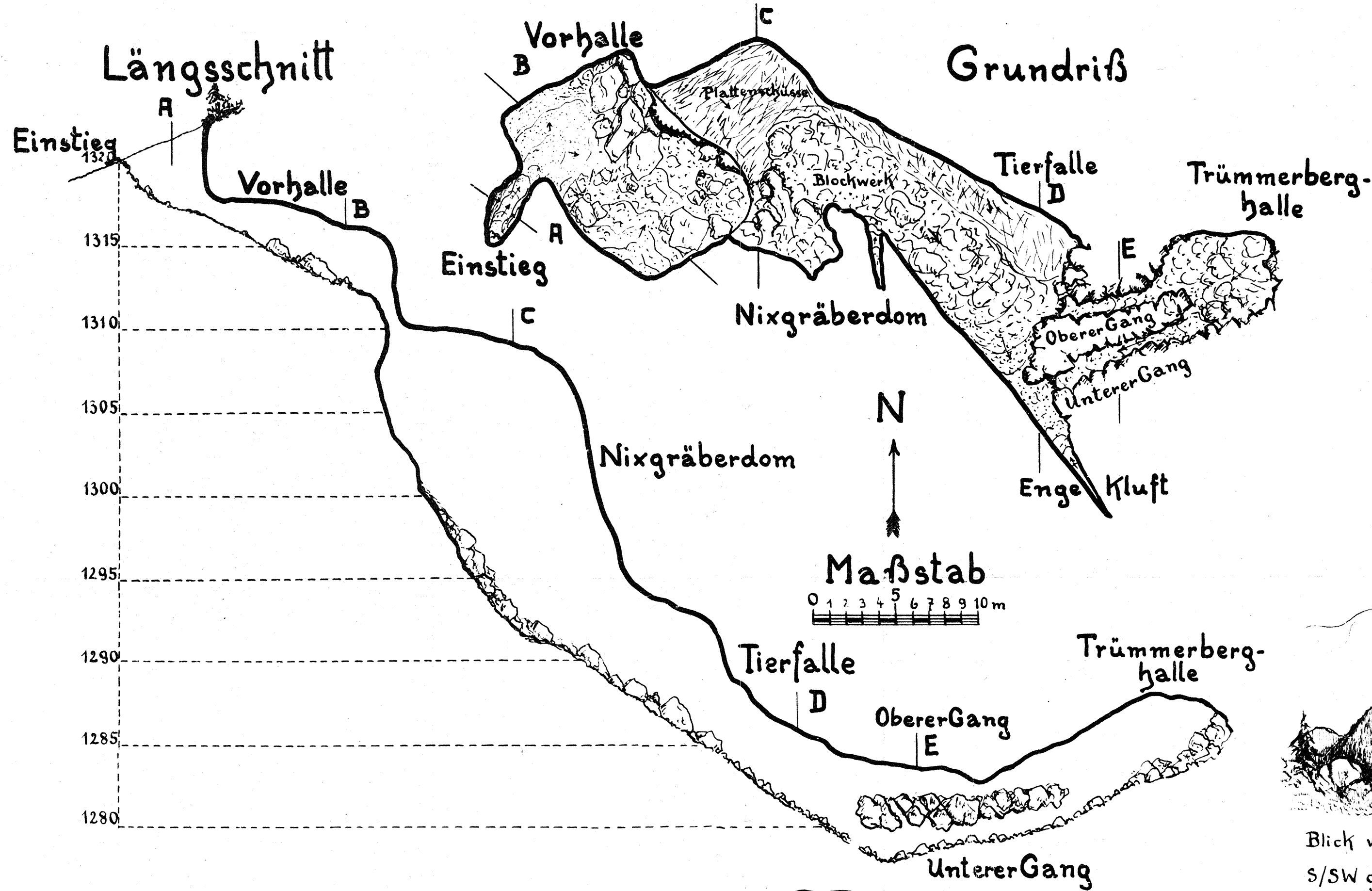
Egg 31 Naturhohle

STEIFERMARK



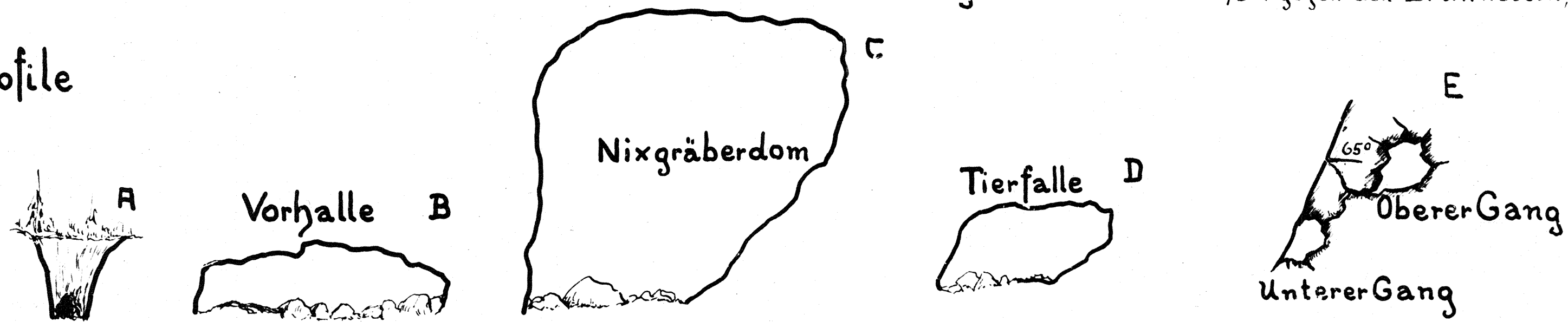
Galmeiloch c. 1320m

(Gomainlucke) am Ostabfall des Brunnsteines, Mitterbach
Niederdonau



Blick vom Eisernen Herrgott, 1463m, nach S/SW gegen den Brunnstein, 1403m.

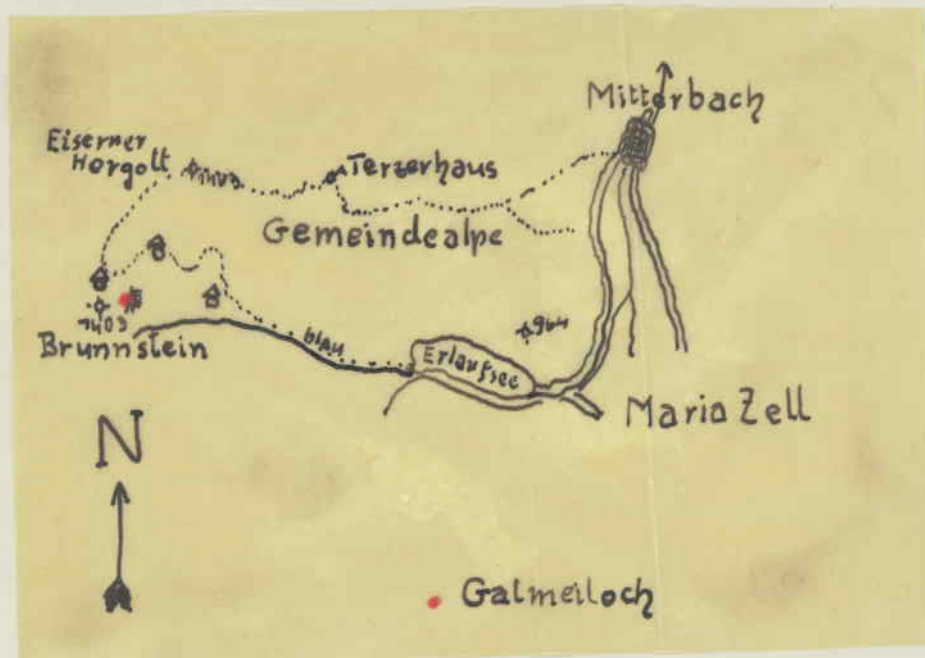
Querprofile



" N A T U R H Ö H L E "

GALMEILOCH ODER GOMAINLUCKE

KG Mitterbachseerotte

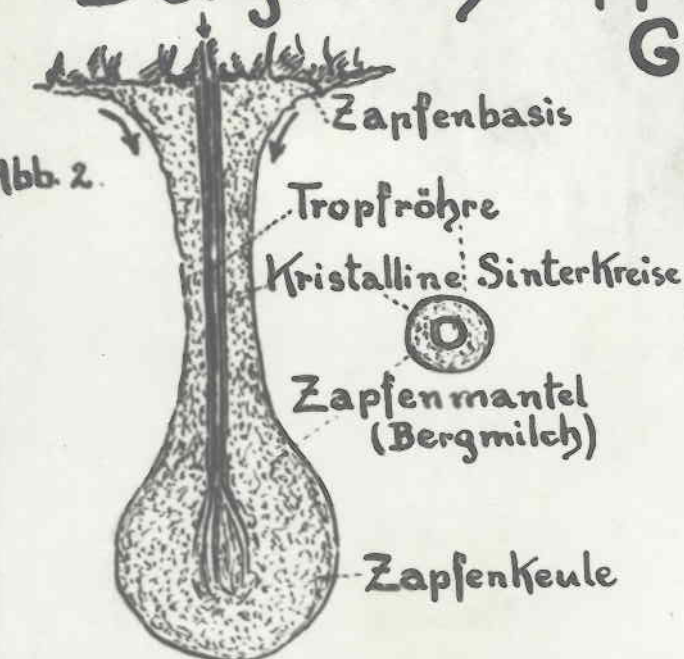


" N A T U R H Ö H L E "

GALMEILOCH ODER GOMAINLUCKE

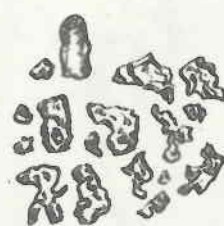
KG Mitterbachseerotte

Bergmilchtropfsteine Lose Sinterformen Galmeiloch



Verschiedene Formen

Abb. 3.



nat. Gr.

Teufelskonfekt

Schematischer Schnitt

D^r F. Waldner
1941.