

Economy

Agricultural production

Product	Unit	Ø Lower Austria 05-14	Lower Austria 2015	Austria 2015
Cereals and maize	t	2.259.530	2.249.273	4.843.799
Vegetables	t	305.793	305.906	560.244
Potatoes	t	582.429	429.890	536.473
Sugar beets	t	2.427.269	2.223.573	2.853.282
Alternative cultures	t	193.241	163.153	350.473
Pasture farming	t	1.555.827	1.222.153	6.718.255
Fruit production	t	26.675	32.845	256.948
Wine production	hl	1.450.151	1.362.693	2.268.403
Bovine livestock	head	451.793	442.582	1.957.610
Swine livestock	head	849.364	773.775	2.845.451

Nights spent 2015 by origin

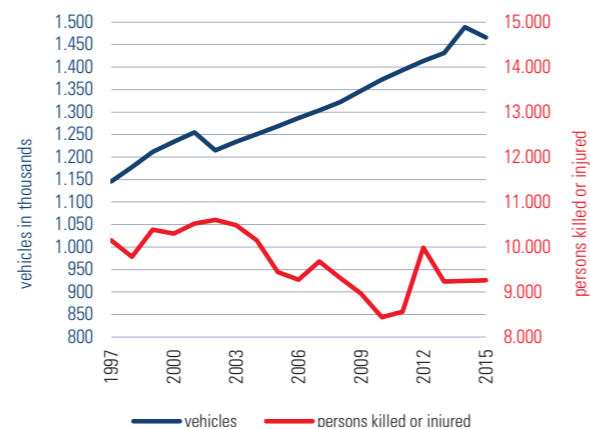
Lower Austria	1.538.070
Vienna	1.424.283
Upper Austria	543.529
Styria	418.877
Carinthia	179.542
Salzburg	176.591
Burgenland	142.552
Tyrol	136.485
Vorarlberg	62.766
Foreign	2.181.269

Health Care

	2015	2016	Change in %
Ordinations by fields			
General medical practitioner	1.707	1.704	-0,2
Specialist medical practitioner	1.981	2.013	1,6
Internal medicine	348	357	2,6
Psychiatry/Neurology	237	237	0,0
Gynaecology/Obstetrics	232	236	1,7
Dentists	609	601	-1,3
Pharmacies	239	239	0,0

Road Traffic

Motor vehicles, persons killed or injured 1997–2015



Vehicles by type

Type of vehicle	2005	2015
Motor vehicles	1.268.264	1.465.923
Passenger cars	894.790	1.038.005
Passenger cars with electric drive	46	1.157
Passenger cars with hybrid drive	-	3.163
Motorcycles	74.067	103.874
Motorcycles (not more than 45 km/h, 50 cc and 4 kW)	69.509	57.104
Lorries	74.924	94.104
Buses	952	1.008
Tractors	129.011	136.726
Trailers	158.900	198.573

Security

	Executive staff	Stations	Vehicles
Police (2016)	4.375	271	1.032
Active members			
Fire brigades (2015)	75.466	1.726	5.427
Employees			
Red Cross rescue service (2015)	11.390	252	671
Arbeiter-Samariter-Bund rescue service (2015)	1.806	48	132
Johanniter (2015)	34	3	2

Education

Educational institutions 2015

	Number	Groups/Classes	Children/Students
Kindergarten	1.092	2.889	52.904
After-school care	178	463	9.507
Primary school	625	3.423	62.694
General secondary school	176	660	12.374
New secondary school	255	1.463	28.171
Special needs education	101	484	3.856
Pre-vocational school	58	154	2.919
Secondary school/Colleges for vocational training	103	1.443	33.923
Academic secondary school	58	1.541	35.341
Tertiary education	6	-	17.743



Governor, Dr. Erwin Pröll

“Lower Austrian Statistics in a nutshell” – this could be the subheading for the Lower Austrian Statistical Folder. In its customary manner, this folder makes changes and successful developments visible, while also addressing shortcomings and shows us what we can be proud of and where we need to step up our efforts.



Deputy Governor, Johanna Mikl-Leitner

“Lower Austria in Figures” – in this edition covering the whole province – is just a small selection of all the topics that have been statistically analysed in our province. Nevertheless, this folder provides an informative overview of the most important developments and gives us food for thought on various issues.

References

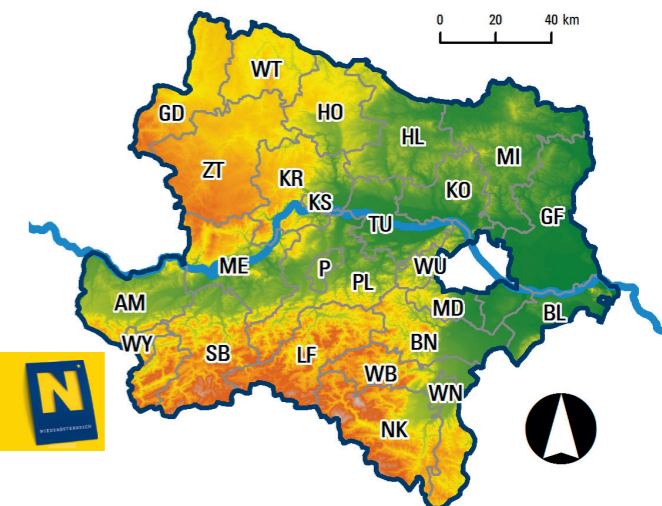
Statistics Austria; NÖ Economic Chamber; GfK; Public Employment Service Austria; Medical Association NÖ; Regional Dental Association NÖ; Pharmaceutical Salary Fund of Austria; Regional Police Command NÖ; Regional Fire Brigade Command NÖ; Austrian Red Cross – Regional Association NÖ; Arbeiter-Samariter-Bund – Regional Association NÖ; Johanniter

Publisher and Producer

Office of the Lower Austrian Government
Department of Spatial Planning and Regional Policy – Statistics
Landhausplatz 1, 3109 St. Pölten
Responsible for content: Markus Hemetsberger
Graphics: Laudenbach, 1070 Wien
Print: Office of the Lower Austrian Government
e-Mail: post.ru2statistik@noel.gv.at · Tel. +43 2742 9005-14241

Lower Austria in figures 2016

Resident population (2016)	1.653.691
Percentage females	50,77%
Area (2012)	19.186 km ²
Forest	39,61%
Agricultural use	48,70%
Building area	0,96%
Permanent settlement area	60,54%
Length of national border	414 km
Statutarstädte (Towns with charters)	4
Verwaltungsbezirke (Administrative districts)	21
Gemeinden (Municipalities)	573
Stadtgemeinden (Urban municipalities)	76
Marktgemeinden (Market towns)	327
Katastralgemeinde (Cadastral communities)	3.040
Ortschaften (Localities)	3.878
District courts	24
Prisons and penal institutions	10
Civil registry offices	186
Hospitals	27
Largest lake: Ottensteiner Stausee	4,30 km ²
Highest mountain: Schneeberg	2.076 m
Longest river: Donau	2.848 km
within Lower Austria	218 km



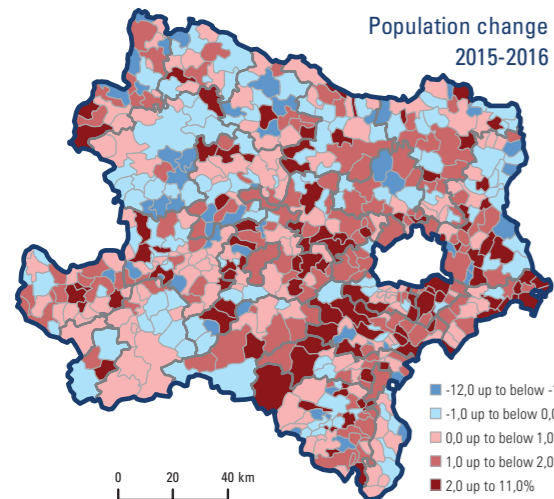
www.noel.gv.at



Population

Demography 2015

Administrative district	Births	Deaths	Arrivals	Departures
Krems a.d. Donau	209	278	2.134	1.740
St. Pölten	481	604	3.755	2.904
Waidhofen a.d. Ybbs	112	119	588	522
Wr. Neustadt	474	451	3.767	2.969
Amstetten	1.178	1.011	3.903	2.968
Baden	1.302	1.387	10.729	8.672
Bruck a.d. Leitha	397	470	2.653	1.668
Gänserndorf	849	1.018	4.889	3.622
Gmünd	274	521	1.470	1.015
Hollabrunn	429	524	2.031	1.561
Horn	253	420	1.255	856
Korneuburg	623	696	3.848	2.838
Krems (Land)	483	523	2.108	1.731
Lilienfeld	241	288	1.497	1.294
Melk	736	802	2.536	2.032
Mistelbach	583	856	2.805	2.031
Mödling	927	1.203	6.620	5.384
Neunkirchen	758	1.021	3.961	3.081
St. Pölten (Land)	923	1.006	4.576	3.322
Scheibbs	420	376	1.140	1.066
Tulln	658	749	3.520	2.243
Waidhofen a.d. Thaya	225	348	860	648
Wr. Neustadt (Land)	691	780	3.945	3.217
Wien-Umgebung	1.020	1.323	9.165	6.885
Zwettl	353	484	1.043	1.016
Lower Austria	14.599	17.258	84.798	65.285

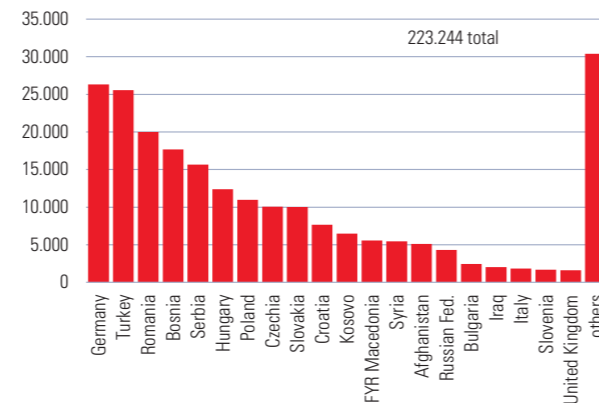


Population

Population 2016 by age group

Administrative district	total	0-14	15-24	25-49	50-64	65+
Krems a.d. Donau	24.344	2.888	2.729	8.223	5.232	5.272
St. Pölten	53.478	7.619	6.014	18.291	11.020	10.534
Waidhofen a.d. Ybbs	11.364	1.745	1.425	3.576	2.298	2.320
Wr. Neustadt	43.833	6.842	5.295	15.732	8.435	7.529
Amstetten	114.617	18.114	13.986	38.542	24.104	19.871
Baden	143.736	21.235	15.970	49.055	30.153	27.323
Bruck a.d. Leitha	44.969	6.643	4.599	15.086	9.852	8.789
Gänserndorf	99.738	14.417	10.945	33.176	22.307	18.893
Gmünd	37.557	4.642	4.130	11.387	8.411	8.987
Hollabrunn	50.617	6.596	5.461	16.113	11.642	10.805
Horn	31.452	4.135	3.500	9.692	7.096	7.029
Korneuburg	77.821	11.167	8.490	26.351	17.250	14.563
Krems (Land)	56.620	8.002	6.238	18.316	12.649	11.415
Lilienfeld	26.220	3.561	3.007	8.293	5.501	5.858
Melk	77.255	11.666	9.173	25.711	16.600	14.105
Mistelbach	74.945	9.960	8.154	23.979	17.636	15.216
Mödling	117.833	17.072	12.466	39.269	24.015	25.011
Neunkirchen	86.353	11.980	9.661	27.905	18.503	18.304
St. Pölten (Land)	99.098	14.651	11.553	33.051	21.425	18.418
Scheibbs	41.195	6.462	5.083	13.634	8.335	7.681
Tulln	74.113	10.589	8.338	24.985	16.248	13.953
Waidhofen a.d. Thaya	26.407	3.371	2.948	8.216	5.888	5.984
Wr. Neustadt (Land)	76.595	11.103	8.494	25.493	16.397	15.108
Wien-Umgebung	120.692	18.155	13.119	40.998	24.839	23.581
Zwettl	42.839	5.891	5.013	13.647	9.484	8.804
Lower Austria	1.653.691	238.506	185.791	548.721	355.320	325.353

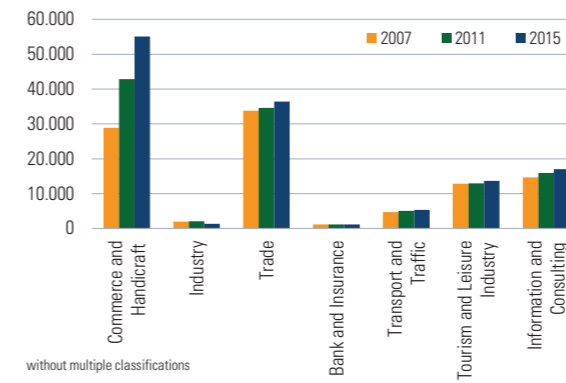
Residents of foreign origin 2016



Economy

Gross regional product per capita 2013 in €	31.400
Imports 2014 in billion €	23,8
Exports 2014 in billion €	20,3
Employees 2015 (annual average)	588.119
Number of apprentices 2015	16.833
Registered unemployed 2015 (annual average)	58.143
Unemployment rate 2015 (annual average)	9,1%
Job vacancies (AMS) May 2015	3.762
Job vacancies (AMS) May 2016	4.981
Purchasing power per resident 2015 (GfK, AT=100)	104,4
Purchasing power per household 2015 (GfK, AT=100)	107,8
Active business units 2015	109.049

Active business units 2007-2015 by branch



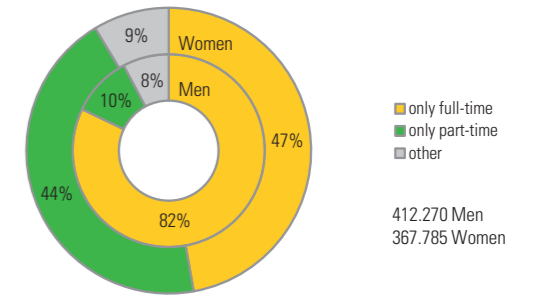
Economically active persons 2013

	total	Men	Women
Economically active persons	842.059	446.492	395.567
employees	735.634	385.253	350.381
self-employed, family workers	102.550	59.285	43.265
part-time in percent	23,0%	7,9%	40,6%
Economic sector			
Agriculture	41.500	20.663	20.837
Production	188.316	145.640	42.676
Services	606.917	277.759	329.158
Educational level (persons 25 to 64 years of age)			
Compulsory education	148.001	52.590	95.411
Integrated vocational training	325.140	205.198	119.942
Secondary technical/vocational schools	159.049	64.540	94.509
Higher vocational/Academic secondary schools	138.187	67.433	70.754
Universities and other tertiary education	118.157	53.736	64.421

Register-Based Labour Market Statistics

Economy

Wage tax-payers 2014 by working time and sex



Gross annual income 2014 by sex

Administrative district	per capita income in € (Median)		
	total	Men	Women
Krems a.d. Donau	27.638	34.036	21.113
St. Pölten	28.058	34.187	21.725
Waidhofen a.d. Ybbs	27.219	34.993	19.087
Wr. Neustadt	27.820	33.125	21.852
Amstetten	27.055	35.256	18.319
Baden	28.914	34.923	22.899
Bruck a.d. Leitha	28.846	35.035	22.147
Gänserndorf	29.359	35.421	22.552
Gmünd	23.533	30.600	17.433
Hollabrunn	25.982	31.926	19.661
Horn	25.242	30.938	18.946
Korneuburg	30.414	36.785	23.931
Krems (Land)	25.895	33.020	18.677
Lilienfeld	25.691	32.173	18.765
Melk	25.864	32.690	18.268
Mistelbach	27.533	33.804	20.473
Mödling	32.450	39.123	25.982
Neunkirchen	26.779	33.109	20.084
St. Pölten (Land)	27.034	33.696	20.106
Scheibbs	25.477	32.486	17.570
Tulln	29.237	35.276	22.367
Waidhofen a.d. Thaya	23.540	29.671	17.587
Wr. Neustadt (Land)	27.576	33.741	20.664
Wien-Umgebung	31.240	37.494	25.173
Zwettl	22.664	29.517	16.331
Lower Austria	27.899	34.248	21.047

Wage tax Statistics 2014 - per capita income of wage tax-payers employed more than 334 days a year