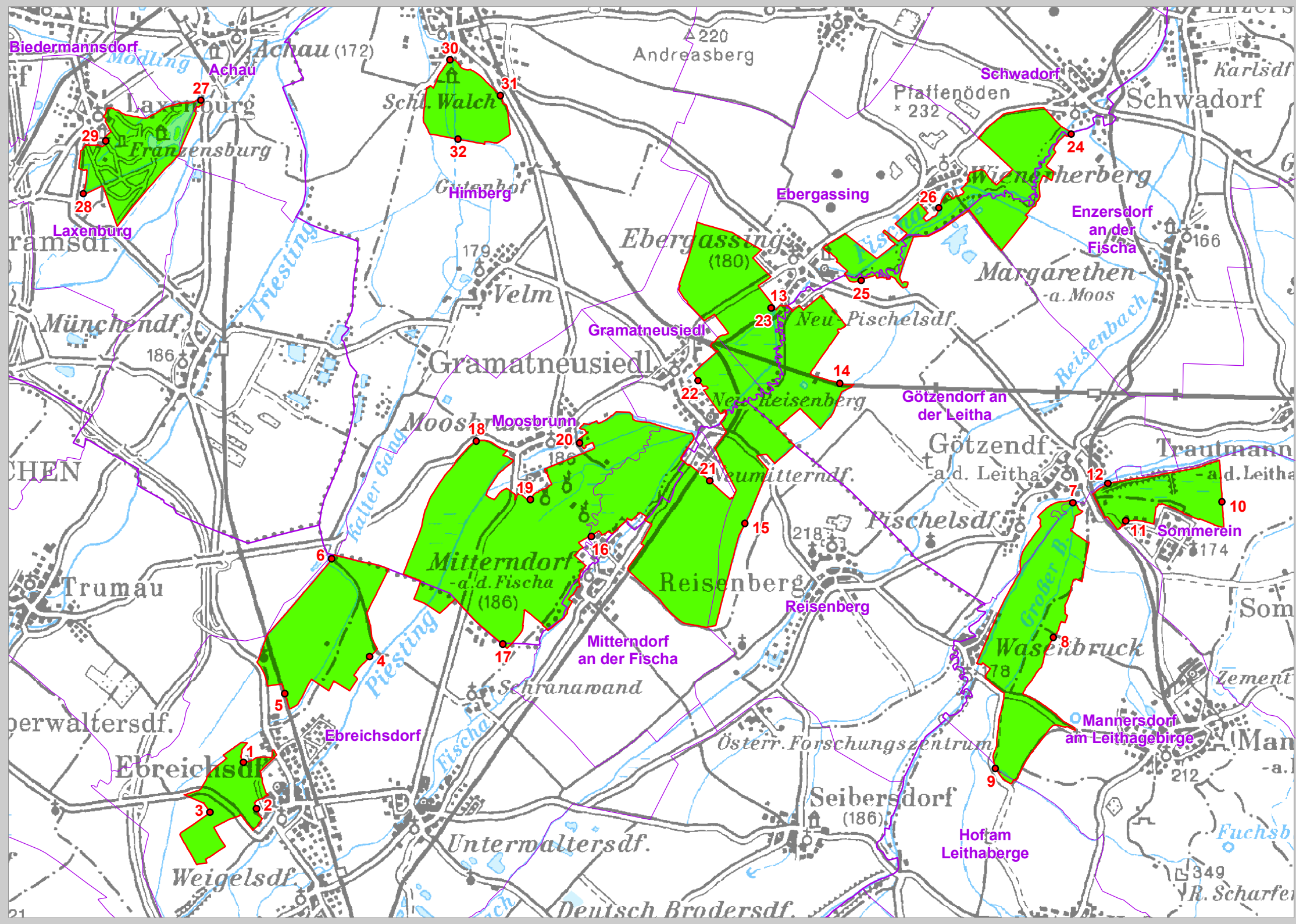





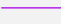
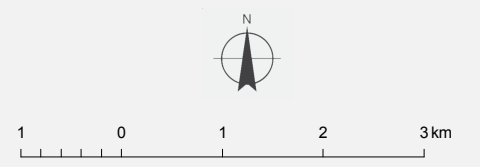


**EUROPASCHUTZGEBIET
VOGELSCHUTZGEBIET
FEUCHE EBENE**



- Feuchte Ebene**
-  Vogelschutzgebiet
 -  Gebietsaußengrenze
 -  Punkt laut Anlage 1 zu § 11
- Verwaltungsgrenzen**
-  Landesgrenze
 -  Grenze politischer Bezirke
 -  Grenze politischer Gemeinden



Quellen:
Topographie (ÖK 200): BEV, Gruppe L, 1080 Wien
Nat.rechtl. Festl.: Amt der NÖ Reg., Abt. Naturschutz